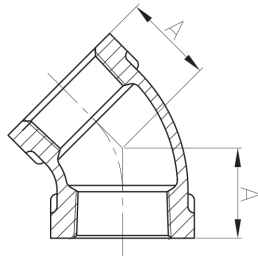


ASTM 45° ELBOW

- Fabrication Standards: American Standard Class 150
- Material: ASTM A197/A197M
- Dimensions: ASME B16.3, B16.14
- Union Dimensions: B16.39
- Threads: ASME B1.20.1
- Size Available: 1/8" - 8"

120

45° Elbow



Size	Inch	1/8	1/4	3/8	1/2	3/4	1	1 1/4	1 1/2
	mm	6	8	10	15	20	25	32	40
Dim. (mm)	A	16	18.5	20.3	22.4	24.9	28.5	32.8	36.3
Size	Inch	2	2 1/2	3	4	5	6	8	
	mm	50	65	80	100	125	150	200	
Dim. (mm)	A	42.7	49.5	55.1	66.3	77.5	87.9	106.7	

